

# The MaxxFan Solution for RV Ventilation

# MAXFAN

## Standard Models

**NEW! Easy to Read Remote Control**



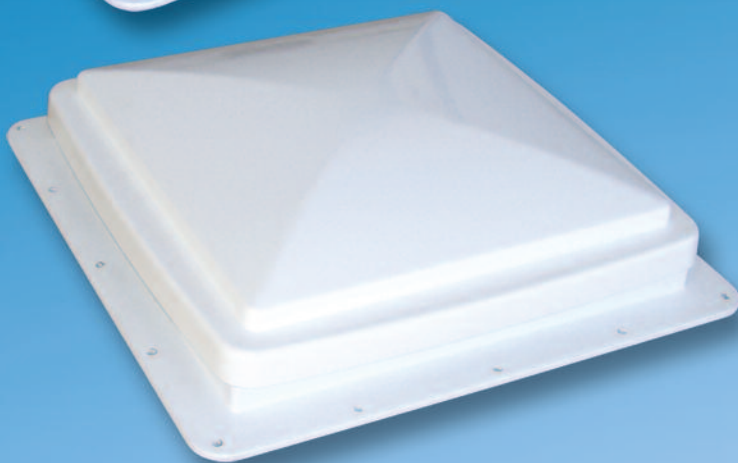
Twin lifting arms, No more lid fluttering in high winds or when driving

Long life, sealed ball bearing motor

Rain Sensor closes lid if it rains (Remote Model)

Fits all standard 14"x 14" roof openings

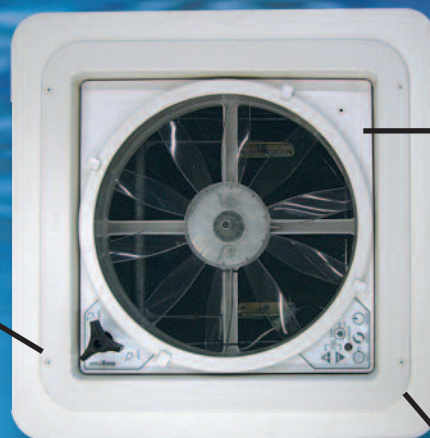
Waterproof, molded mounting holes for MaxxAir Vent covers



Closes securely for a low profile appearance



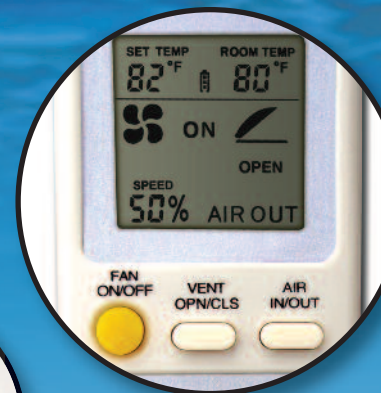
Lid opening knob locks lid in place on Manual Models and allows manual closing of Remote Control Models if RV loses 12 volt power



Easy to remove Insect Screen

MaxxFan Interior

Flush mounted, easy to clean keypad featured on all models (Model 4500K shown)



Standard Model MaxxFans are available in Manual Opening or Remote Control Opening models

### Choose the Model You Need!

MaxxFan Models and Features	Smoke Lid	White Lid	Manual Open Lid	Electric Open Lid	Thermostat	Intake & Exhaust	Remote Control	Controls at Ceiling	Rain Sensor
	Model 4000K		✓	✓		✓	✓		✓
Model 4500K	✓			✓	✓	✓	✓	✓	✓

# MAXAIR

VENT CORP.

[www.maxxair.com](http://www.maxxair.com)  
or call 800-780-9893