

TURBO/MAXX 12 Volt Installation Instructions

P/N 00-965001 Deluxe Model 1200T WITH THERMOSTAT

P/N 00-965007 Standard Model 3550 WITHOUT THERMOSTAT

WARNING - To reduce risk of fire, injury to persons or damage to property, use only in the manner intended by MaxxAir Vent Corp. If you have questions, contact MaxxAir Vent Corp. @ 1-800-780-9893

NOTE: Your Turbo/Maxx All Weather RV Ventilator Fan has been thoroughly tested prior to shipment. Following these instructions carefully will provide you continued satisfaction with your Turbo/Maxx.

Tools Required: POWER DRILL WITH 5/32", 1/16", & 3/8" DRILL BITS, PHILLIPS HEAD SCREW DRIVER AND PENCIL, RULER AND ADJUSTABLE WRENCH



Your carton contains:

- Turbo/Maxx Housing with fan blade, motor and wire harness (power cord)
- Foam Gasket - Air Seal (weather stripping)
- Control Console with PC Board, protective console cover
- Owner Registration Card - Postage Paid

Hardware kit:

- 2 hinge brackets
- 2 locking brackets
- 2 1/4-20 stainless steel carriage bolts, nuts, star washers

- 7 #6 - 3/4" self tapping screws
- 2 1/4" disconnects (electrical terminals)
- 1 locking clip for wire harness (power cable)
- 8 #6 - 1/2" machine screws, nuts, flat washers, lock washers
- 2 wing nuts

Please Note - Some of these items are located in the triangular carton compartment marked **“CAUTION!! DO NOT DISCARD - THIS CARTON CONTAINS HARDWARE & WARRANTY INFORMATION”**

Step 1

Choose a roof vent on your RV that will serve your ventilation needs and is strategically located for obtaining 12 volt DC power. Be certain the 12 volt RV circuit selected is capable of supporting the 4 additional amps generated by the Turbo/Maxx. It is advisable to leave the vent interior insect screen in

place to “catch” any hardware accidentally dropped during roof-top installation.

NOTE: The Hinged Brackets must be installed on the Passenger side of the roof vent. This is the same side as the 12 volt power cord hole is installed as shown in step #13.



Step 2

Open your roof vent 3" or 4". Using a ruler or yardstick, draw a line on the RV roof at the rear of your roof vent on the driver's side.

Step 3

Place one of the Locking Brackets so the rear edge is 1 1/2" from the line drawn in Step 2.

Step 4

Mark the location of the two slots in the bracket onto the sidewall of the roof vent.

Step 5

Drill a 5/32" hole at the center of each marked slot location thru the fan sidewall.

Step 6

Fasten the Locking Bracket to the roof vent with two (2) #6 machine screws, washers, and nuts.

Step 7

Place the ruler or yardstick even with the rear edge of the just installed Locking Bracket. Place the second Locking Bracket so the rear edge is 9 1/8" from the rear edge of the first Locking Bracket.



Step 8

Mark the location of the two slots in the bracket on the sidewall of the roof vent. Drill a 5/32" hole at the center of each marked slot location thru the roof vent sidewall.

Step 9

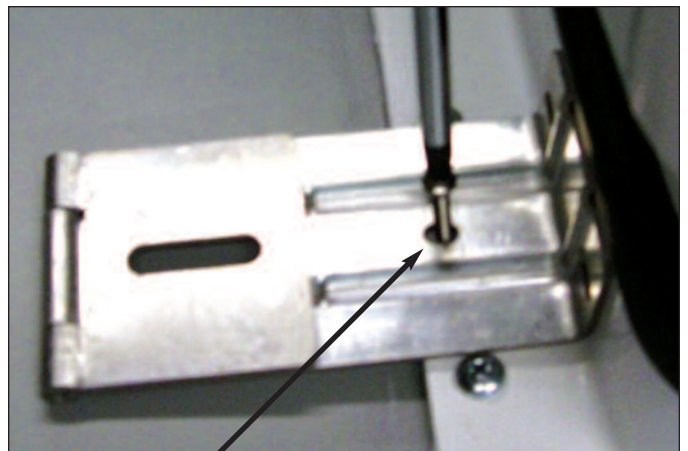
Fasten the Locking Bracket to the roof vent with two (2) #6 machine screws, washers, and nuts.

Step 10

Repeat Steps 2 thru 9 on the other side of the roof vent to install the Hinge Brackets. Start at the rear of your roof vent on the Passenger side.

NOTE: If your roof vent frame is plastic, and/or a more secure mounting installation is desired, you may perform the following:

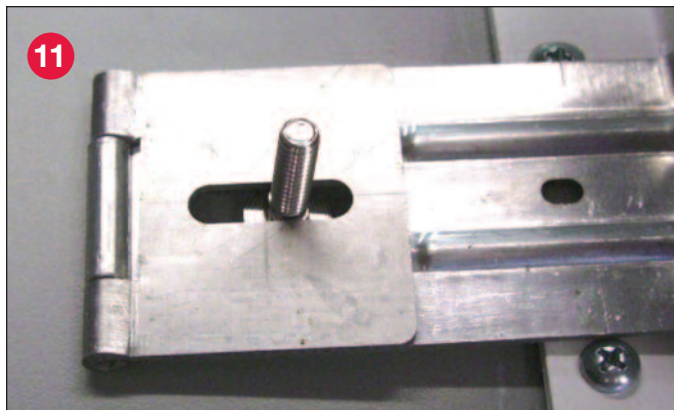
Additionally fasten the Turbo/Maxx brackets down to your roof surface using a #6 x 3/4" self tapping screw (provided) in the hole located at the inboard end of the mounting bracket slot. Drill a 1/16" pilot hole. Drill only as deep as the screw length. Fill the hole with roof sealant and install the #6 screws.



NOTE: Use roof sealant in hole before installing screw and on top of screw head after installing..

Step 11

Open the Hinge Leafs on both Hinged Brackets. Install a carriage bolt thru the slot in each Hinge Bracket. Close the leaf of the Hinge Bracket to trap the carriage bolt. Verify that the square shank of the carriage bolt fits in the hinge leaf slot to prevent the carriage bolt from rotating when tightening. The carriage bolt should be sticking up towards the sky.



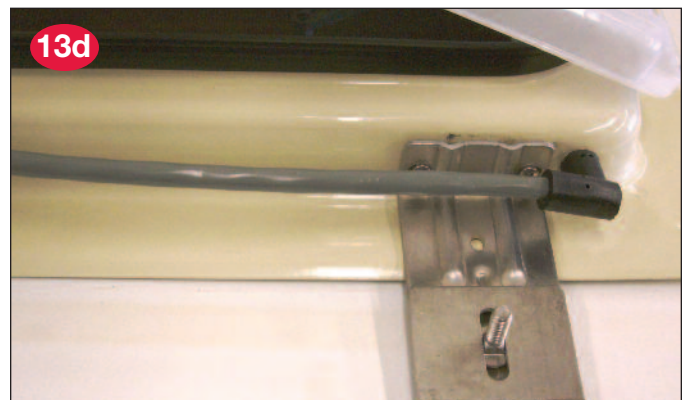
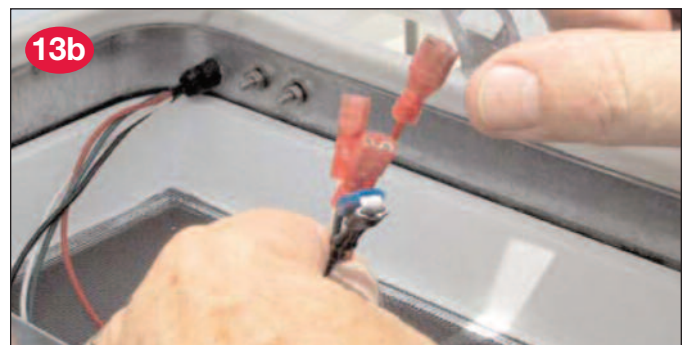
Step 12

The air-sealing foam gasket must be applied at this time. Avoid stretching the gasket as you remove the paper backing. Place the adhesive side down against the plastic flange of the Turbo/Maxx as shown below. If your gasket needs to be trimmed, cut it to size with ordinary household scissors. Be certain there are no gaps that may detract from the Turbo/Maxx ability to pull air from the cabin. Gaps around the brackets after the installation is complete are acceptable. It is neither necessary nor is it recommended to apply caulking around this gasket area.



Step 13

Drill a 3/8" hole for the fans power cord near the hinged bracket at the front passenger side of the RV vent side wall. Drill as high as the vent lid will allow when it is in the closed position. Insert the four control wires (one at a time) into the 3/8" hole. Slide the locking clip provided in the hardware kit over the wires and press it firmly over the molded restraint. Slide the clip so that it fits tightly against the inside wall of the vent.

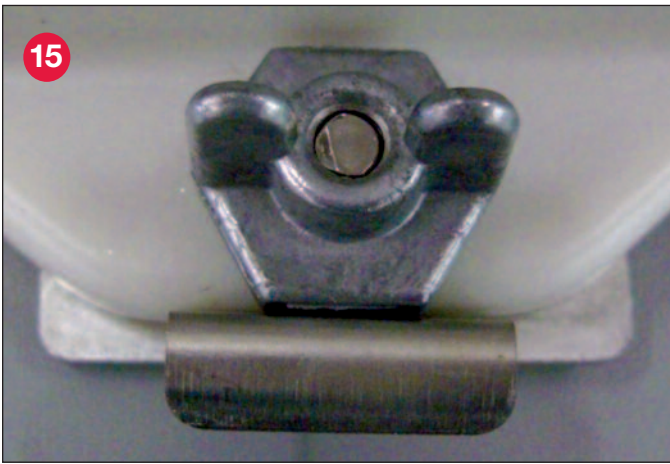


Step 14

Make certain the wires clear the vent lid as it closes and place the Turbo/Maxx over the two carriage bolts and the two threaded studs on the Locking Brackets with the Fan end towards the rear of the vehicle.

Step 15

Install the Wing Nuts over each of the two studs on the Locking Brackets, do not fully tighten. If necessary slide the Turbo/Maxx towards the Hinged Brackets to give room for the Wing Nuts to clear the outside wall of the Turbo/Maxx.



Step 16

Place a Star Washer over the carriage bolt on each Hinged Bracket. Pull up on the carriage bolt to insure that it is seated securely in the slot of the hinge and install the 1/4-20 nuts & tighten securely.



Step 17

Fully tighten the Wing Nuts by hand. The Spring clip will prevent the Wing Nut from loosening when traveling.

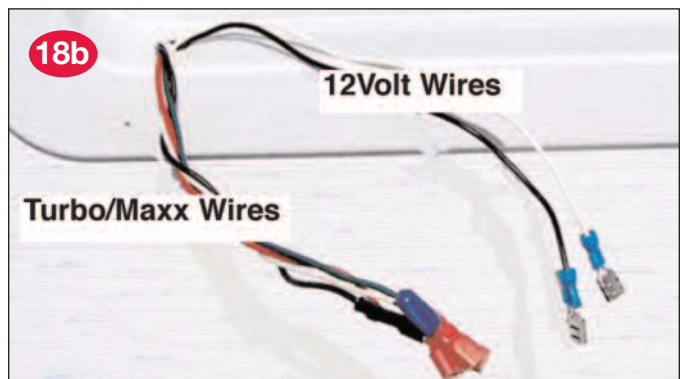
Congratulations!

*The outside installation is now complete.
Move to the inside of the vehicle...*

NOTE: *After making certain the power is turned off, provide a 12 volt DC power source to the front passenger side of the roof vent. This is the same corner that the Turbo/Maxx power cord enters the vent from the roof.*

Step 18

Drill a clearance hole or file a notch in the existing roof vent screen frame and pull the power cord from the Turbo/Maxx and the two 12 volt DC power wires to the inside of the vehicle. A notch may be preferred as it allows future removal of the screen. Some frames have enough clearance to allow wires to fit between the frame and the roof opening. In that event, a hole in the trim ring may be all that is required.



Step 19

Before installing the control console you must be certain to identify your vehicle 12 volt positive(+) and 12 volt negative (-) power supply wires. If you are unsure how to use a volt meter to identify polarity of the vehicle 12 volt power that you are connecting to the Turbo/Maxx control console, consult a qualified RV technician.

Be sure your 12 Volt Power Supply wires are connected to the proper "pair" of terminals located at the edge of the PC Board!

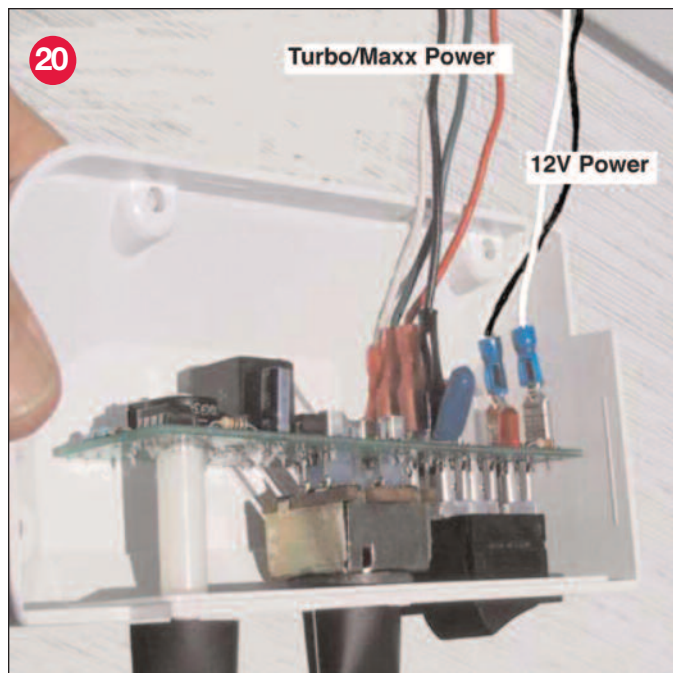
Step 20

Connect the four wires from the Turbo/Maxx power cable to the PC board in the control box. These terminals marked FAN are located near the center of the board. Push the white wire (smaller female terminal) onto the horizontal male terminal labeled WHITE COM. Connect the green wire to the horizontal male terminal labeled GREEN LOW, the red wire to the horizontal male terminal labeled RED MED and the black wire to the horizontal male terminal labeled BLACK HIGH.

WARNING! Prior to attaching the control console to the trim ring, test your Turbo/Maxx according to the following instructions:

Put the fan speed control knob in the OFF position and open your vent lid. Turn on the 12 volt power to the Turbo/Maxx.

Note: If the red light inside your control console is lit, you have a reversed polarity condition. Turn off the power and re-attach the power leads to the correct terminals on the console. Turn on the power and the light should be off. Although reversed polarity will not harm this control, the motor will run backwards. If you have a Model 1200T with thermostat, turn the thermostat control fully clockwise. With the Air Direction intake/exhaust rocker switch in the IN position turn your Fan Speed control knob to position one (1), then two (2) and finally (3). At each setting, the fan speed should increase with the three



(3) setting being the maximum speed attainable. Air should be blowing INTO your vehicle. Now turn the speed control knob to OFF and the rocker switch to OUT. Air should be drawn out of the vehicle at the various speeds. It is recommended that you operate the Turbo/Maxx with your vent lid open to allow for maximum ventilation.

If your fan speeds or other functions do not operate as described, review your wire connections and polarity assessment. If you have a thermostat model, refer to the attached operating guide for further information.

If you are satisfied that the control console is functioning properly, proceed to the installation on the vent trim ring.

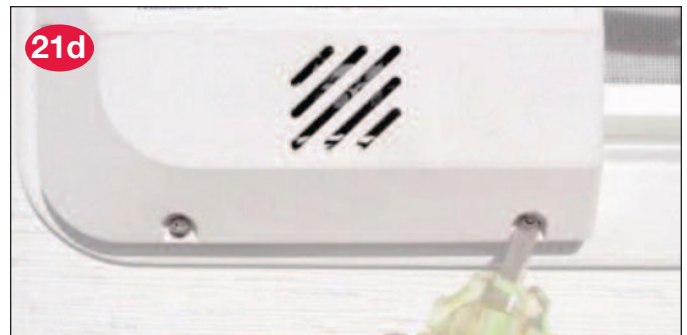
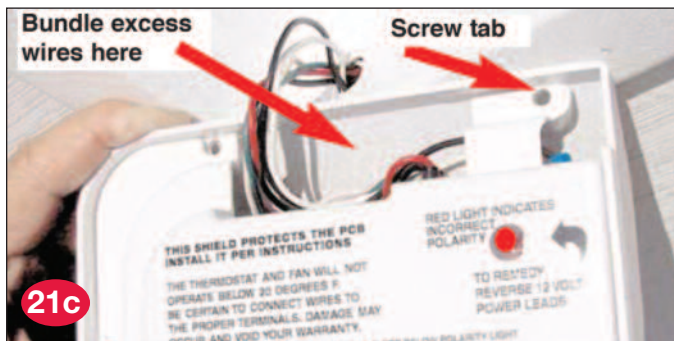
CAUTION! Your interior insect screen must be installed and remain in place while operating this product.

Step 21

Turn off the 12 volt power. Place the control console up against the forward passenger side of the trim ring so that the flange of the control console overlaps the flange of the trim ring. Mark the three hole positions with a

pencil on to the trim ring flange. Allow the control console to hang free by the wires and carefully drill a 1/16" hole at each of your pencil marks. Install the control console protective shield into the control console housing as viewed in 21c. Be certain the 12 volt +/- power wires run under the cover screw tab in that area. Bundle extra wire into the area shown. Hold the console in place per the photo and attach it with the three #6 self-tapping screws provided. **DO NOT over-tighten them!** Your console should look like the photos. (Note that the Thermostat Model 1200T is shown.)

NOTE: Note: If your vent has a shallow screen depth that will not accept the console wall; or should your screen be flush with the ceiling trim ring, make an outline of the console by holding it against the screen and carefully trace the shape onto the screen fabric. Using an appropriate tool, neatly cut the screen fabric to allow the console to pass tightly through the screen.



Step 22

Please be sure to complete the enclosed Postage Paid Owner Registration Card and mail it to us. If you did not receive a card, it is advisable to make note of your Serial Number for any warranty calls you may require. The Serial Number labels are located on the retail carton end flap, the exterior shroud cover beneath the screen, the inner fan duct, the right hand side wall of the interior mounted control console and also the Owner Registration Card. If you prefer you may register your Turbo/Maxx online by visiting our website www.maxxair.com **You must reference your serial number on any communication in order for us to assist you with any issues that may arise.**

Congratulations! You have successfully completed the installation of your new Turbo/Maxx. If there is anything we can do for you, please visit our website www.maxxair.com

Turbo/Maxx[®] Two Year Limited Warranty

MaxxAir Vent Corp. warrants this product to be free of defects due to faulty materials or workmanship for two years from the original date of purchase. MaxxAir shall promptly correct such defects by repair or replacement, at its option, without charge for materials or labor. Proof of purchase by the original consumer is required. Proof of purchase is for your protection in that certain products are serialized. These particular products may have been in your retailer's stock for some time prior to being sold.

This warranty does not apply to defects caused by or resulting from incorrect installation, misuse, accident, acts of God, neglect, improper operation, storage, transportation or mishandling of the product. Unless otherwise authorized by MaxxAir Vent Corp., this warranty does not cover any transportation costs for return of the product or for reshipment of any repaired or replaced product, or cost associated with the installation, removal or reinstallation of the product.

MaxxAir Vent Corp. shall have no responsibility for damage to persons or property or other loss or injury resulting from a defect in the product or from improper use or installation. Under no circumstances shall MaxxAir be liable for special or consequential damages. Any warranties implied by law, including those of merchantability and fitness for a particular purpose, are limited in duration to two years after the date of purchase. In no event shall MaxxAir's liability under this warranty exceed the cost of repair or replacing such defective product. MaxxAir's maximum liability under any warranty is in lieu of all other warranties expressed or implied.

Some states do not allow the exclusion or the limitation of special or consequential damages or allow limitations on how long an implied warranty lasts, so the above limitations may not apply to you.

This warranty gives you specific legal rights. You may also have other rights that vary from state to state.

If you feel you have a claim under this warranty, contact MaxxAir Customer Service Department for advice on handling your claim.



Serial Number

To open your Turbo/Maxx for cleaning or servicing, simply unscrew the Wing Nuts on the Locking Brackets and open your Turbo/Maxx. Make certain the power wires do not catch on anything when opening or closing the Turbo/Maxx.

CAUTION: Be Sure to Securely Re-Install the Wing Nuts on the Locking Brackets After Opening the Turbo/Maxx!

Note: Inspect the Turbo/Maxx unit and mounting brackets twice a year to insure a safe and secure installation is maintained.

For additional information about your Turbo/Maxx, please read the enclosed "Information and Operating Guide".

Information and Operating Guide

The Customer Service phone number for MaxxAir is 800-780-9893,
email is custservice@maxxair.com

Factory Tested

Every Turbo/Maxx ventilator is tested at the factory to ensure proper operation prior to shipment.

Power Consumption

The Turbo/Maxx draws less than 4 amps at high speed (#3 setting) using 13.8 volts DC of power and under 1.4 amps at the lowest speed (#1 setting).

Fuse Protection

The control console is protected by a factory installed 8 amp slow-blow, replaceable mini fuse (located on the PC Board under the polarity light), a non-resettable fuse on the resistor board and an overheat protection switch within the motor. The Turbo/Maxx must be connected to power wires that are fuse protected within the RV. We recommend a maximum of 10 amp fuse protection to this device.

Air Flow Direction

The IN-OUT air direction switch is referred to as the “rocker” switch. It changes the direction of the fan motor so that you may either pull air into the cabin or draw air out. It is imperative that the vent lid is open, and some other vent or window is also at least partially open to allow the powerful Turbo/Maxx motor to cool itself and operate efficiently. Be sure to leave a window or other air vent open to give the Turbo/Maxx some fresh air to work with. This should be at a distance from the ventilator so that fresh air can travel through the entire living area before being exhausted by the Turbo/Maxx. Our Window/Maxx for sliding windows makes an ideal companion product for cross ventilation.

Minimize Wear

When changing fan direction, it is advisable to stop the fan by turning the three-speed knob to the OFF position and wait about ten seconds before restarting the fan in the opposite direction.

Thermostat Control (Model 1200T Only)

The overall temperature range of the thermostat on the 1200T Model is set at the factory. Unless the Speed Control switch is in the OFF position, the Turbo/Maxx 1200T will be fully operable between 20 degrees F and 120 degrees F. To operate, set the fan to exhaust and turn the thermostat fully clockwise (COOLER). The fan should now be running. Slowly turn the thermostat counter-clockwise until the fan just stops running. The thermostat has now “measured” the RV’s existing temperature. The thermostat is designed to allow the RV interior temperature to rise approximately 5 degrees F from this setting before the fan will automatically restart and draw air into the RV from the outside. Turning the thermostat slightly more will increase this 5 degree range. When cooler air is drawn into the RV and the RV’s interior temperature reaches its original setting, the fan will automatically shut off. Positioning the thermostat knob fully clockwise (COOLER) will allow the fan to run constantly.

CAUTION!

When working on the Turbo/Maxx (cleaning the screen or fan blade), be certain to turn the speed control to the OFF position to avoid accidental starting. It would be advisable to turn the 12 volt vehicle power to the Turbo/Maxx OFF to be sure you are safe.



Visit our website at www.maxxair.com

MaxxAir Vent Corp • 5513 W. Sligh Ave • Tampa, FL 33634 • Phone (800) 780-9893 • (813) 882-8282 • Fax (813) 876-2550