

# MaxxAir MaxxFan Standard Models 4000K—4801K PCB replacement instructions



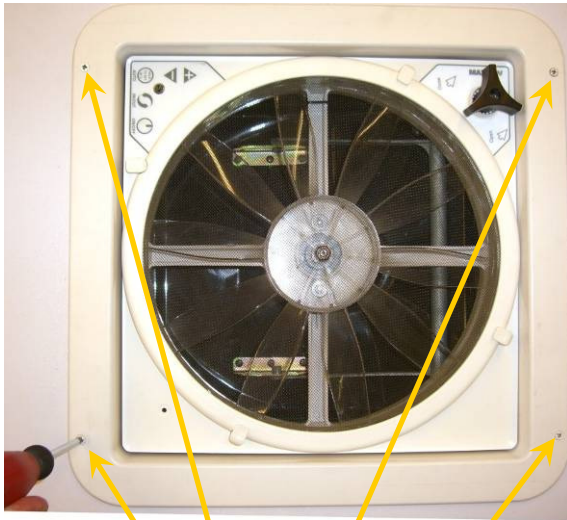
**CAUTION:**  
Disconnect 12volt power to Maxx-Fan at Circuit Breaker or Main Power Supply before working on MaxxFan.

## Step 1



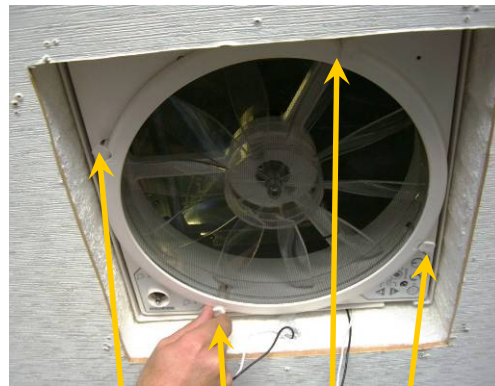
Remove Knob. Save Knob, Screw & all Shafts & Hardware.

## Step 2



Remove four (4) screws that hold Garnish Ring to ceiling. Remove Garnish Ring.

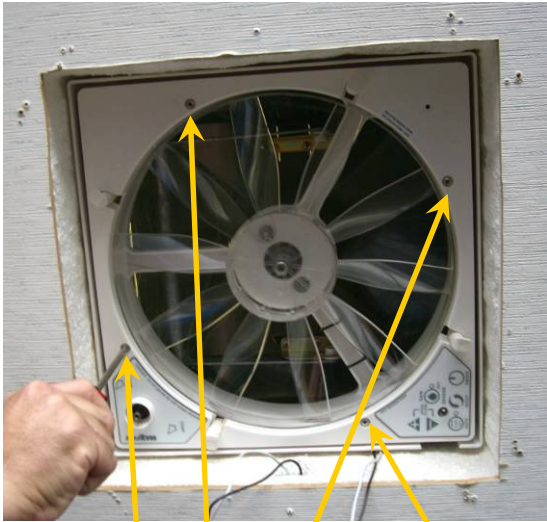
## Step 3



Remove Round Interior Screen by turning four (4) Fingers.

Disconnect vehicle 12volt power wires to MaxxFan.

#### Step 4



Remove four (4) screws that hold Control Plate.

#### Step 5



Carefully lower Control Plate from MaxxFan;

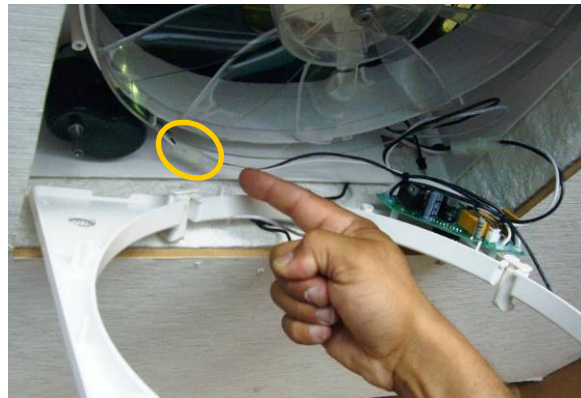
Do Not pull on wires that connect PCB to main MaxxFan body.

#### Step 6



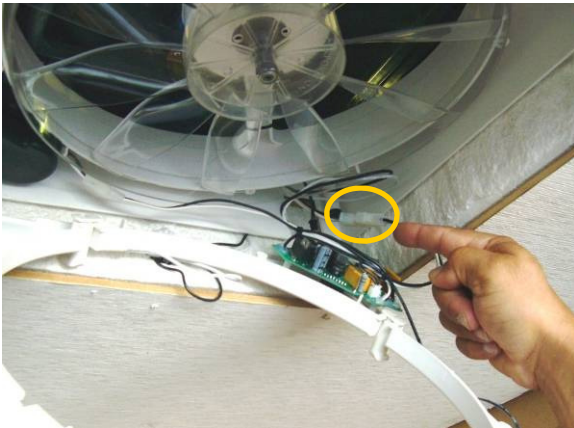
If you have an electric lift model MaxxFan:  
Carefully unplug the connector for the Rain Sensor Wire (black) from PCB, you may use a needle-nose pliers or your fingers. Pull on the connector not the wires.

#### Step 7



If you have an electric lift model MaxxFan:  
Unplug the connector going to the Lift Motor

### Step 8



Unplug the connector going to the Fan Motor.

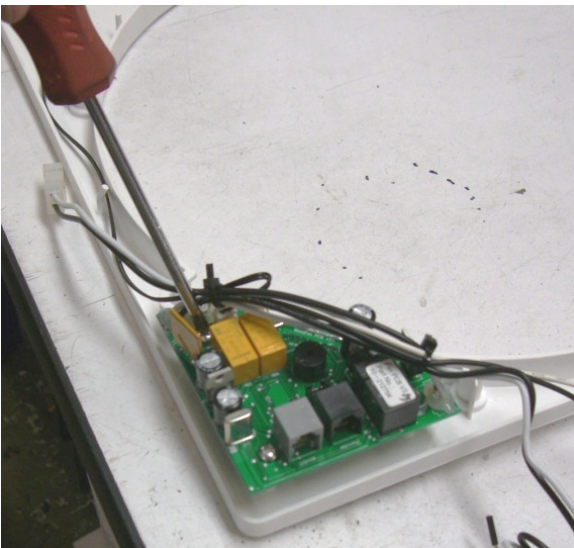
Remove Control Plate and place on bench or table to change PCB.

### Step 9



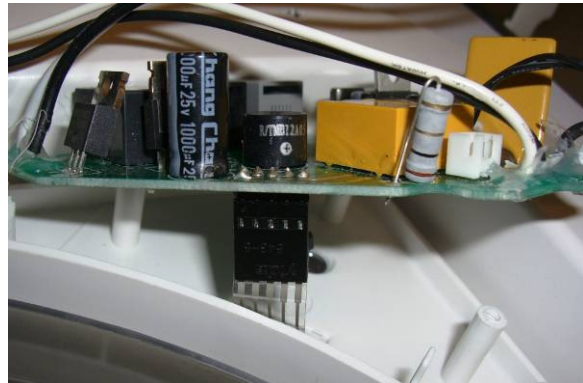
Unplug the connector for the Thermostat Wire (white) from PCB. You will need to cut the cable tie that is holding the Thermistor Wire. Pull on the connector not the wires.

### Step 10



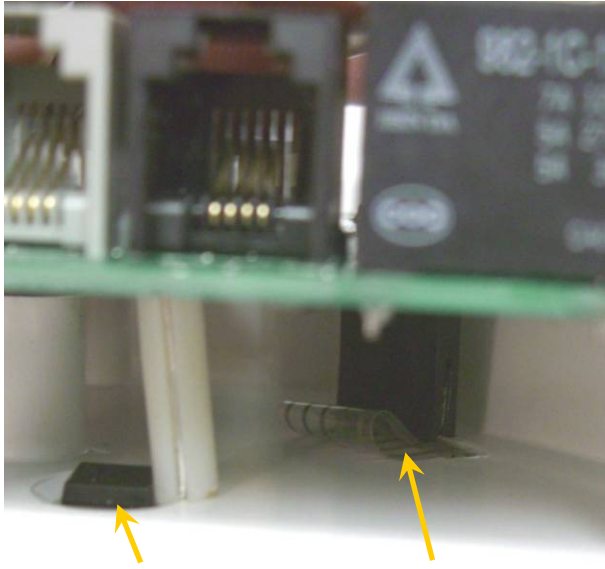
Unscrew three (3) screws that hold PCB to Control Plate. If there are any washers under the screw heads, note which screws for replacement later.

### Step 11



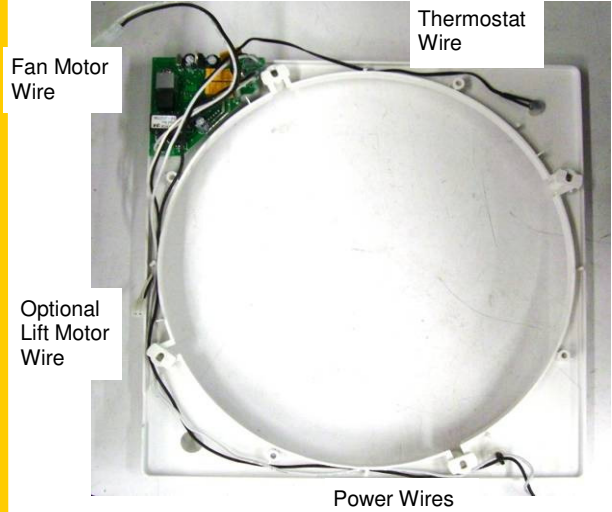
Remove PCB, carefully unplug the KeyPad Ribbon Cable from PCB while lifting PCB from Control Plate.

### Step 12



Install new PCB. Plug the KeyPad Ribbon Cable connector into PCB and fold Ribbon Cable under as shown. Make sure IR sensor is aligned with hole in Control Plate.

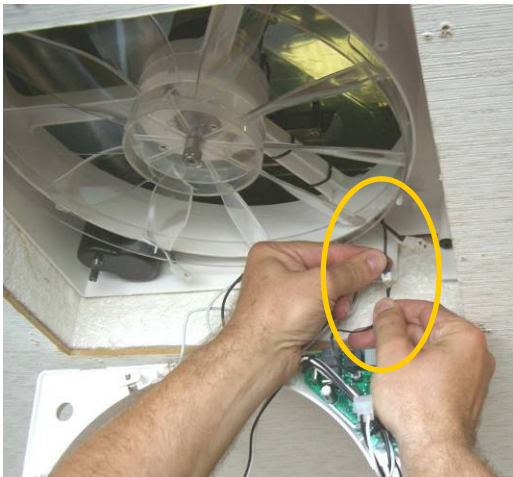
### Step 13



Plug Thermostat Wire into PCB. Route wires around Control Plate as shown, securing wires as needed.

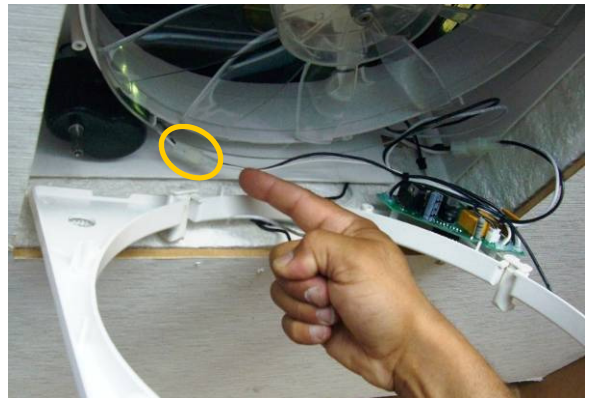
Note: All connectors are designed to plug together in only the correct orientation, do not force connectors.

### Step 14



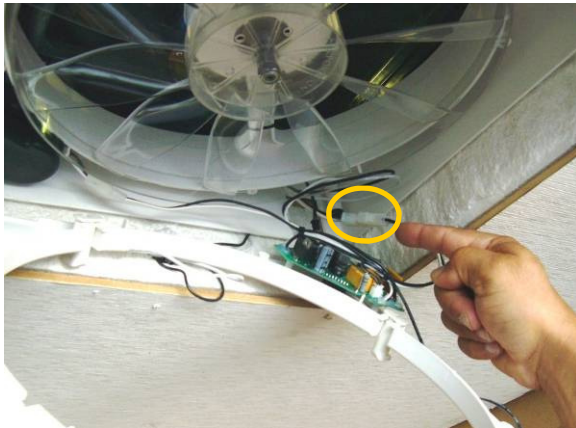
If you have an electric lift model MaxxFan:  
Plug Rain Sensor extension wire from PCB into Rain Sensor.  
Some models may have a longer wire on the rain sensor and may not require an extension cable.

### Step 15



If you have an electric lift model MaxxFan:  
Plug in the connector going to the Lift Motor

### Step 16



Plug in the connector going to the Fan Motor.  
Reconnect Power Wires from MaxxFan to RV 12volt DC power supply.

### Step 17



Reinstall Control Plate onto MaxxFan. Make sure not to pinch any wires underneath Control Plate.

### Step 18



Place 12volt power supply wires into the roof/ceiling opening.  
Reinstall Garnish Ring.  
Reinstall Knob using all Shafts & Hardware that were taken off previously.

### Step 19

Re-energize 12volt power and test MaxxFan.

If you have any questions or problems you may contact MaxxAir Customer Service at 1-800-780-9893 or [custservice@maxxair.com](mailto:custservice@maxxair.com)